

Trout Habitat Projects Update

Nate Anderson, May 4th 2023

Objectives

2022 projects summary

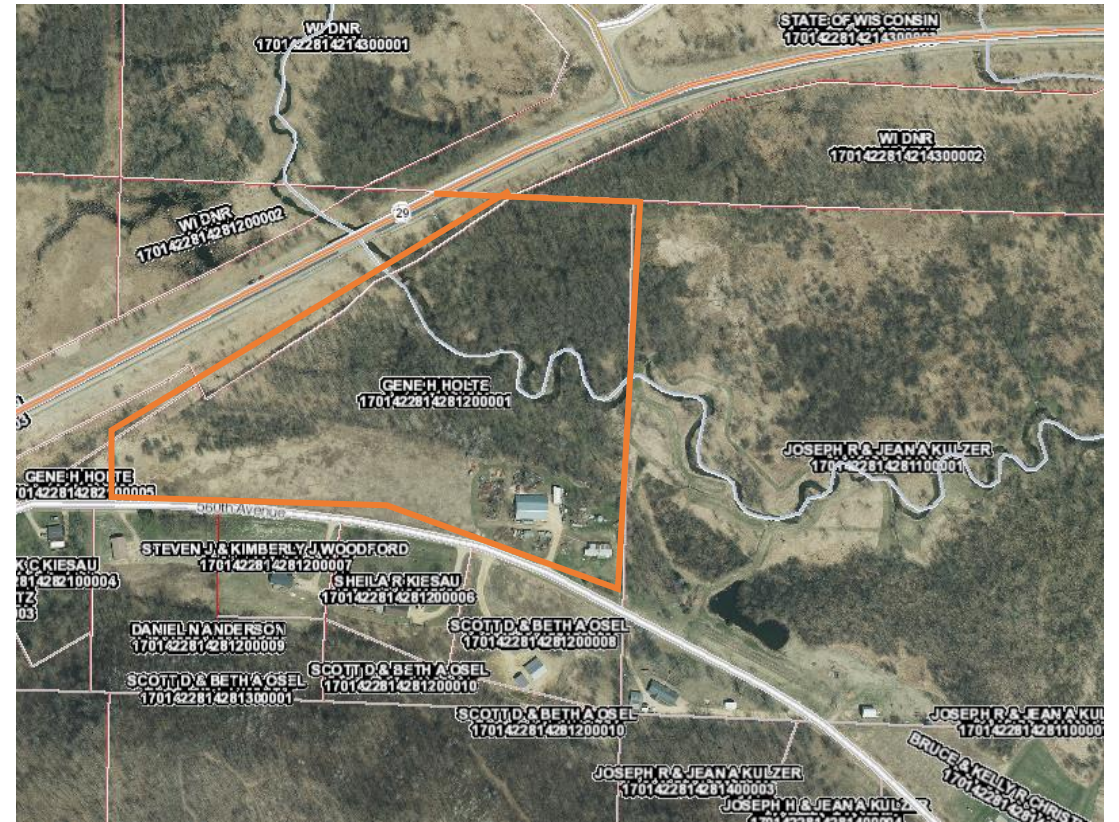
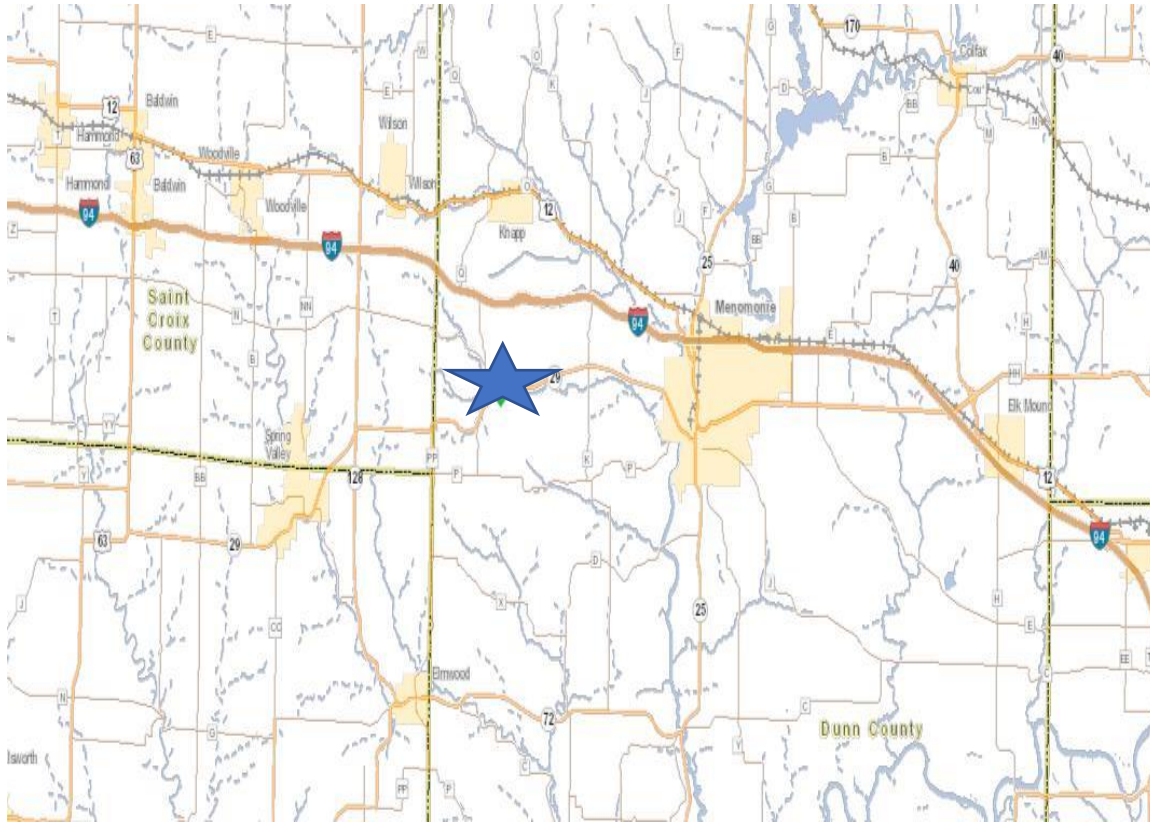
- ✓ Gilbert Creek-Holte easement
- ✓ Sand Creek-Town Park
- ✓ Trimbelle River-Halverson easement
- ✓ Gilbert Creek-Fee title land

2023 list of projects

- Trimbelle River-Thom easement
- Hay Creek-Chippewa County
- Gilbert Creek-Fee title land
- Parker Creek-Fee title land

New easement

Gilbert Creek-Holte easement location



Gilbert - Before



Gilbert - Before



Gilbert Creek Summary

- Last piece of the puzzle
- Started May 9th finished May 24th
- Completed 1,300 feet of Intergraded bank treatment
- Created 1 rock island, 3 spawning riffles, and installed 98 root wads.
- Created 50X75ft parking lot
- Project cost of \$38,000 (\$29.14/foot)

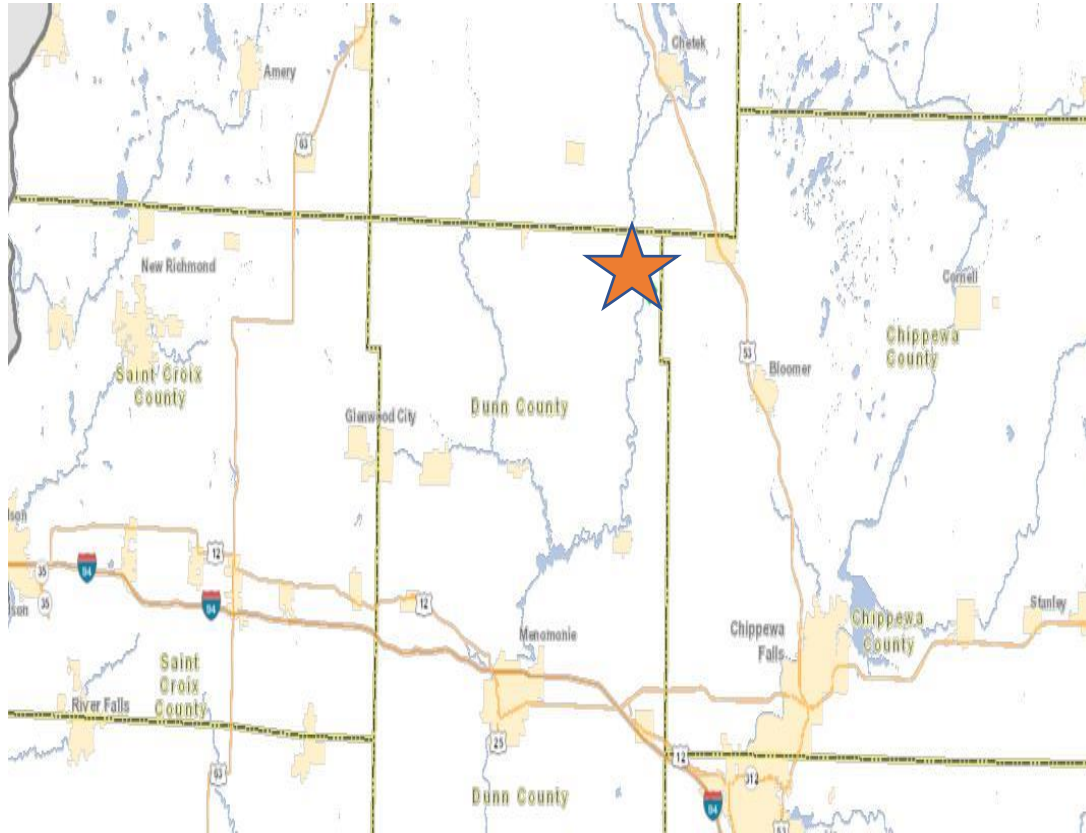
Gilbert - After



Gilbert - After



Sand Creek-Town Park



Sand Creek-Town Park

Before



After



Sand Creek-Town Park

Before



After



Sand Creek-Town Park

After



After



Sand Creek-Town Park

- Location makes for great spot of senior citizens and youth for potential trophy Brown trout fishery.
- Started May 25th and finished on June 15th.
- 650 feet of Intergraded Bank treatment
- Installed 8 LUNKERS, 1 plunge pool, 5 riffles and 1 rock v-wier
- Project cost of \$70,000 (\$106/foot)

Trimbelle-Halverson easement

After



Before



Trimbelle-Halverson easement

After



Before

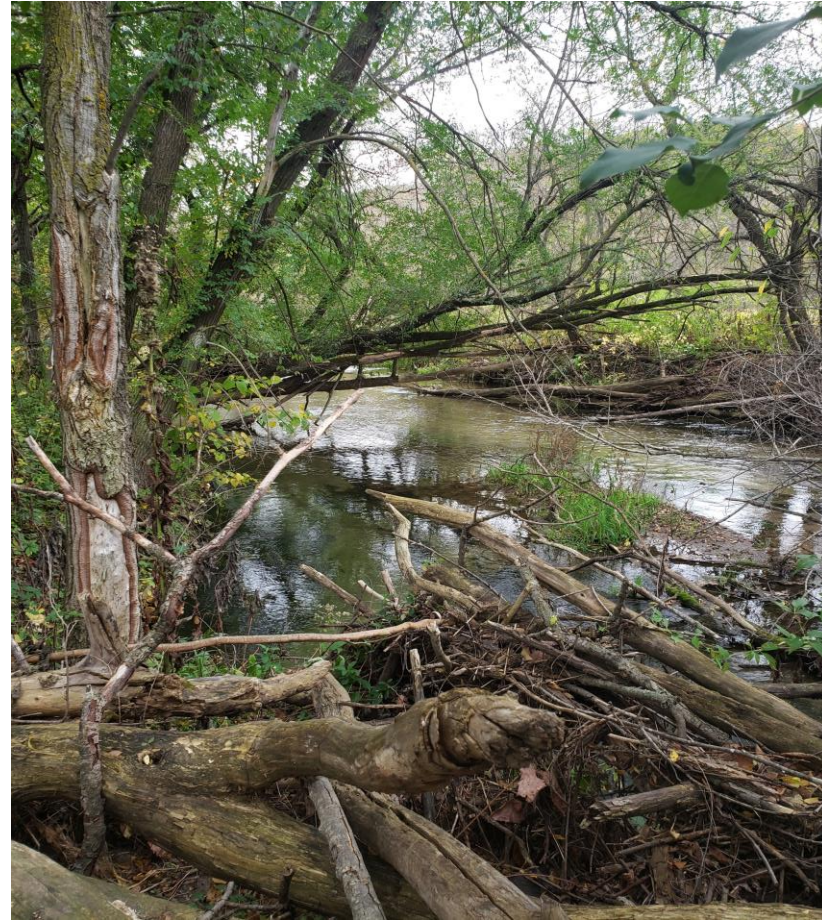


Trimbelle-Halverson easement

After



Before



Trimbelle-Halverson easement

After



Before

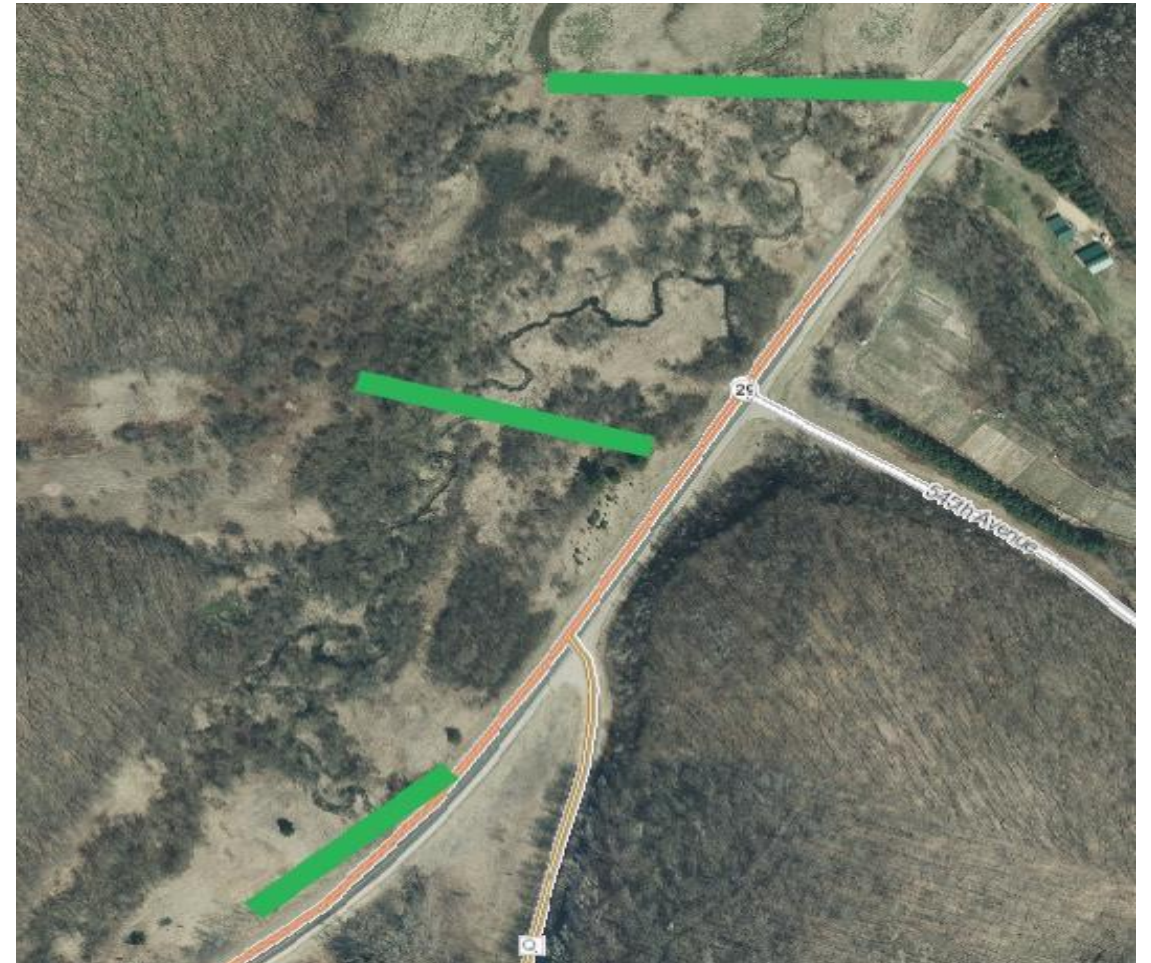
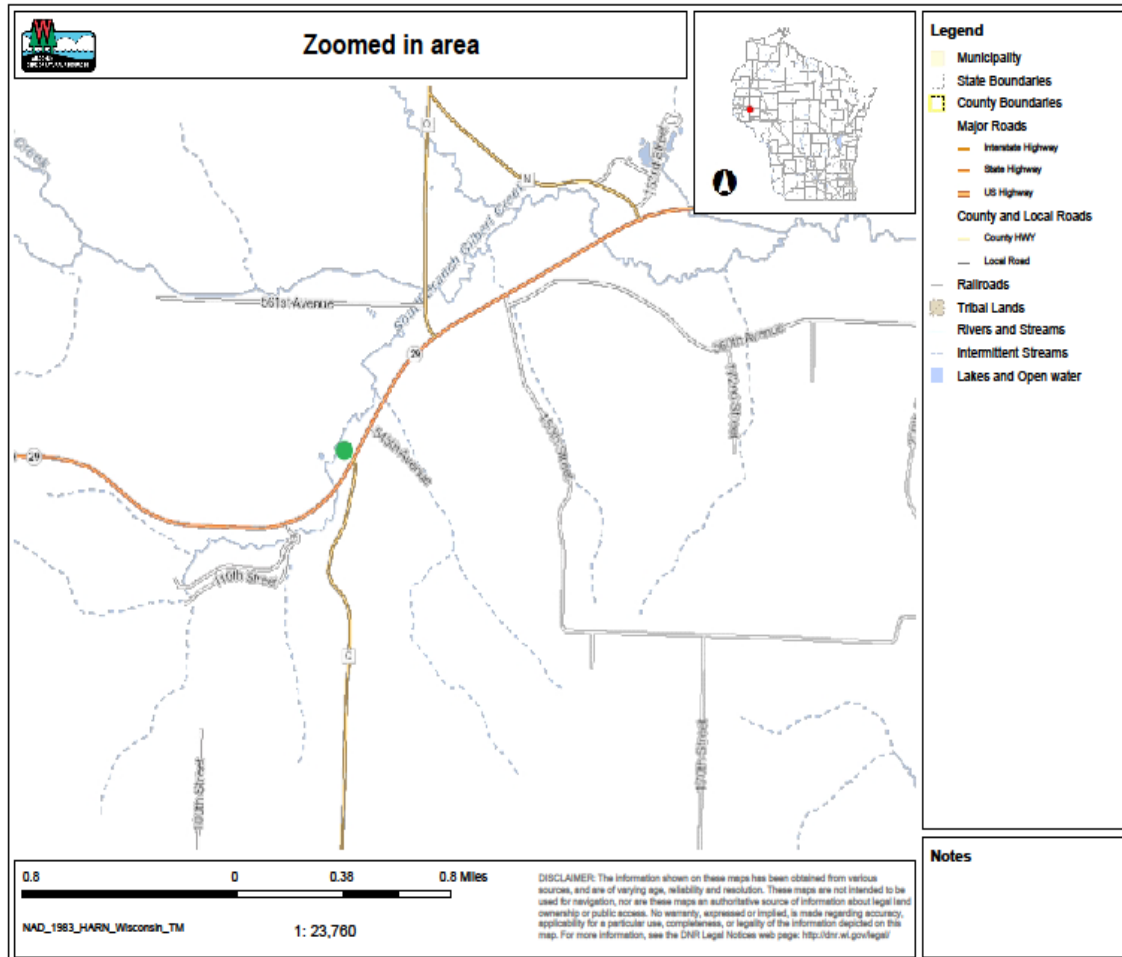




WDNR pilot drone images and video



Gilbert Creek- Fee title



Gilbert-Fee Title



Gilbert-Fee Title



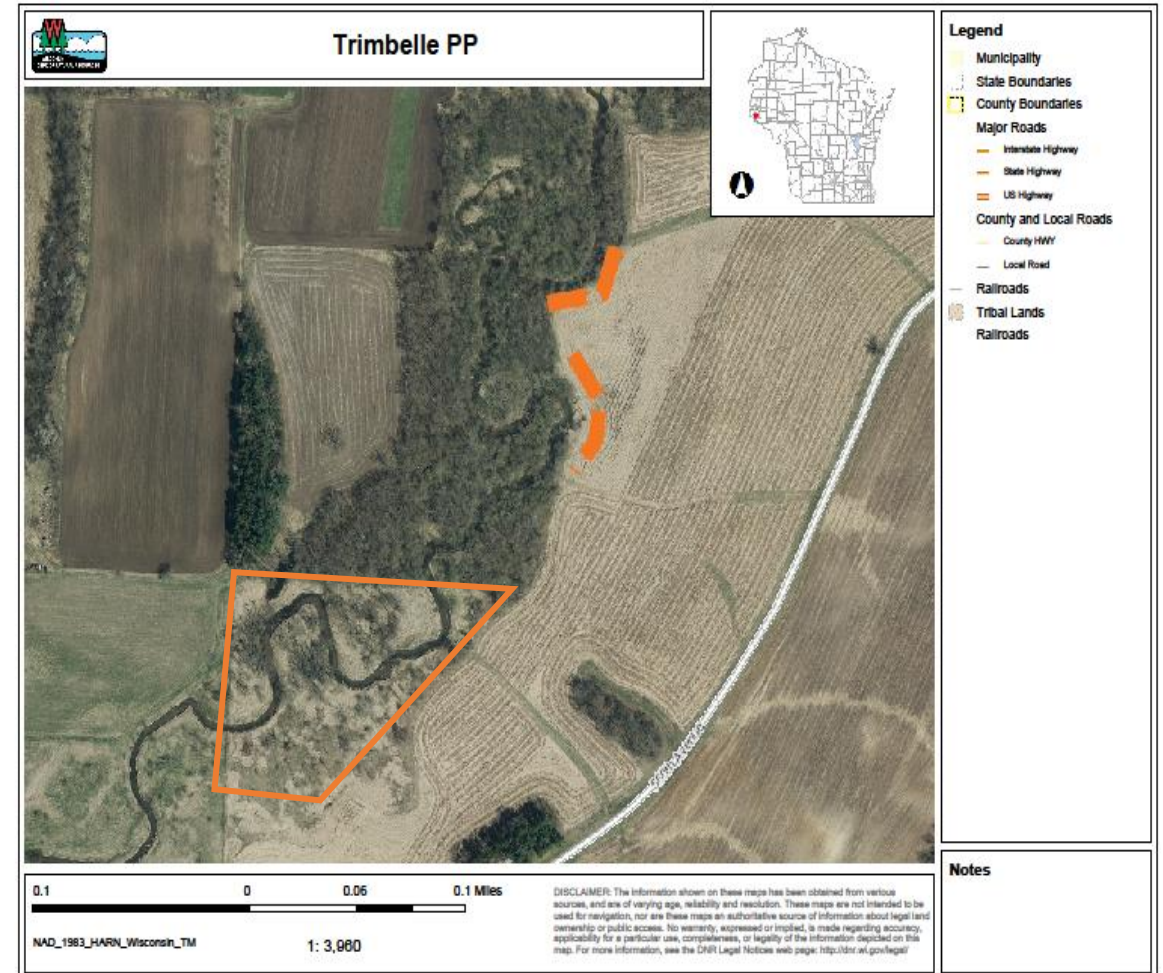
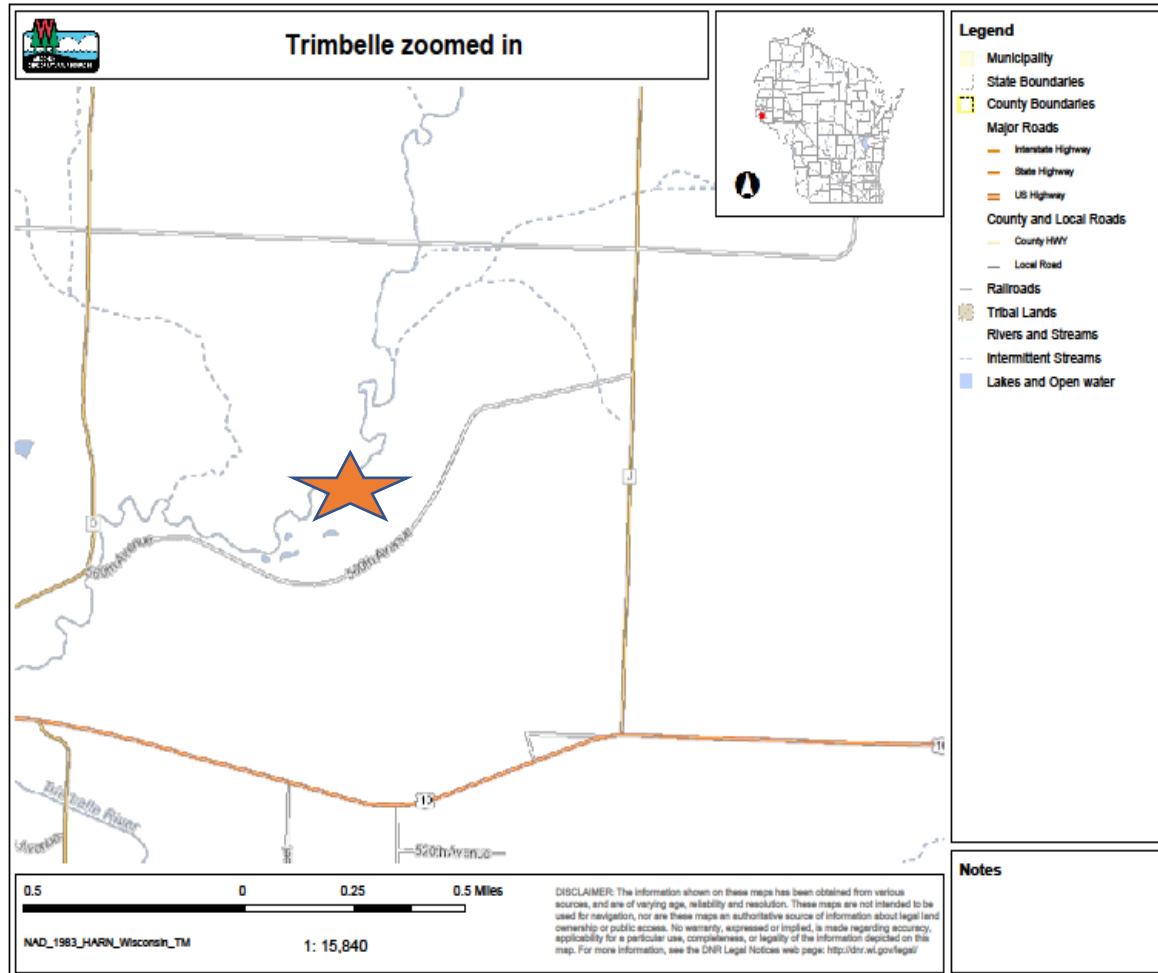
Gilbert-Fee Title



Gilbert-Fee Title

- Completed 1,550 feet
- Started August 17th and finished September 15th
 - Spawning area so didn't want to be in water after deadline
- Installed 36 root wads, 3 ERO's, 16 spawning riffles and 3 backwater refuges
- Total cost of project was \$57,600 or \$37/foot

2023 Trimbelle-Thom easement



Trimbelle-Thom easement



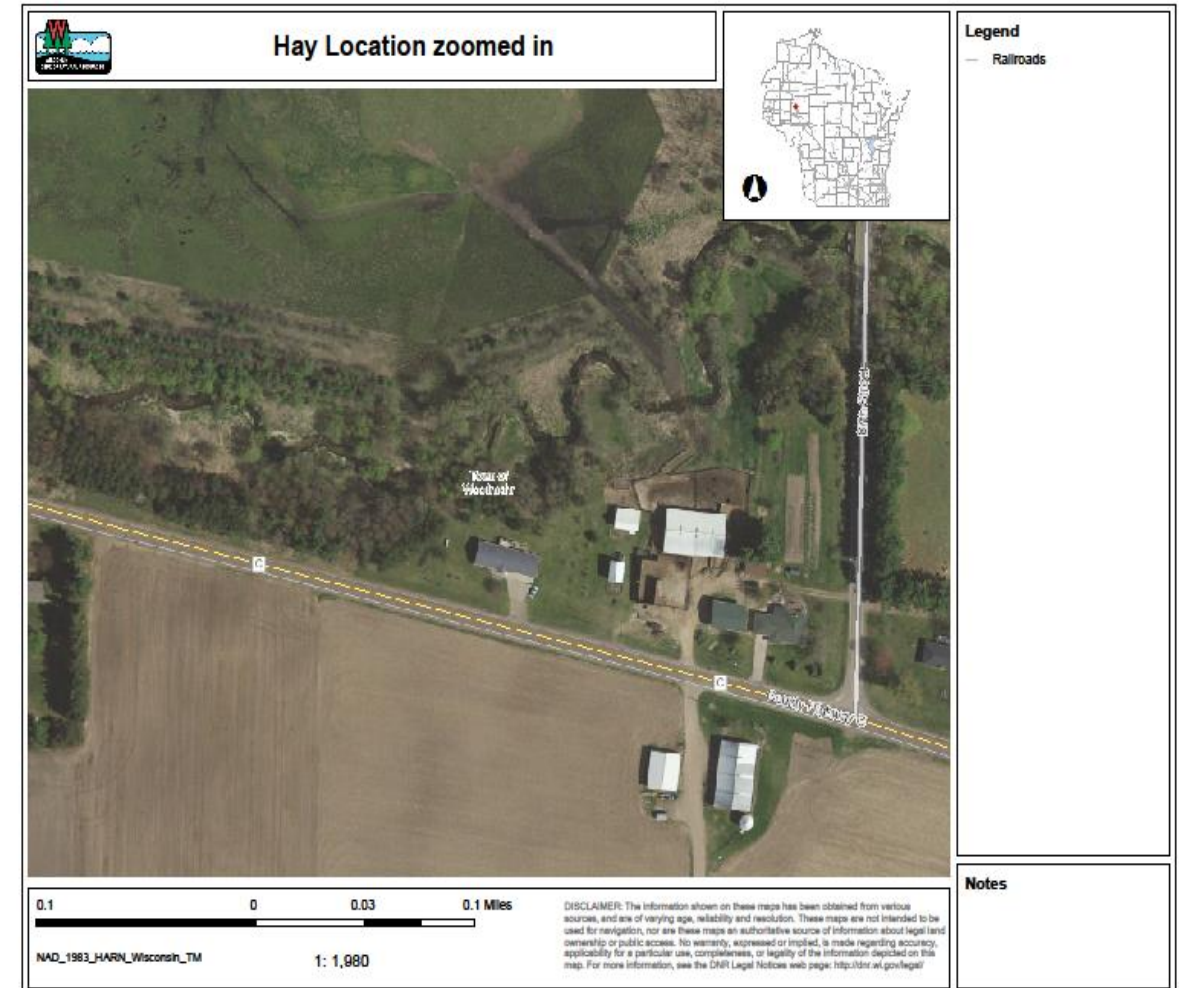
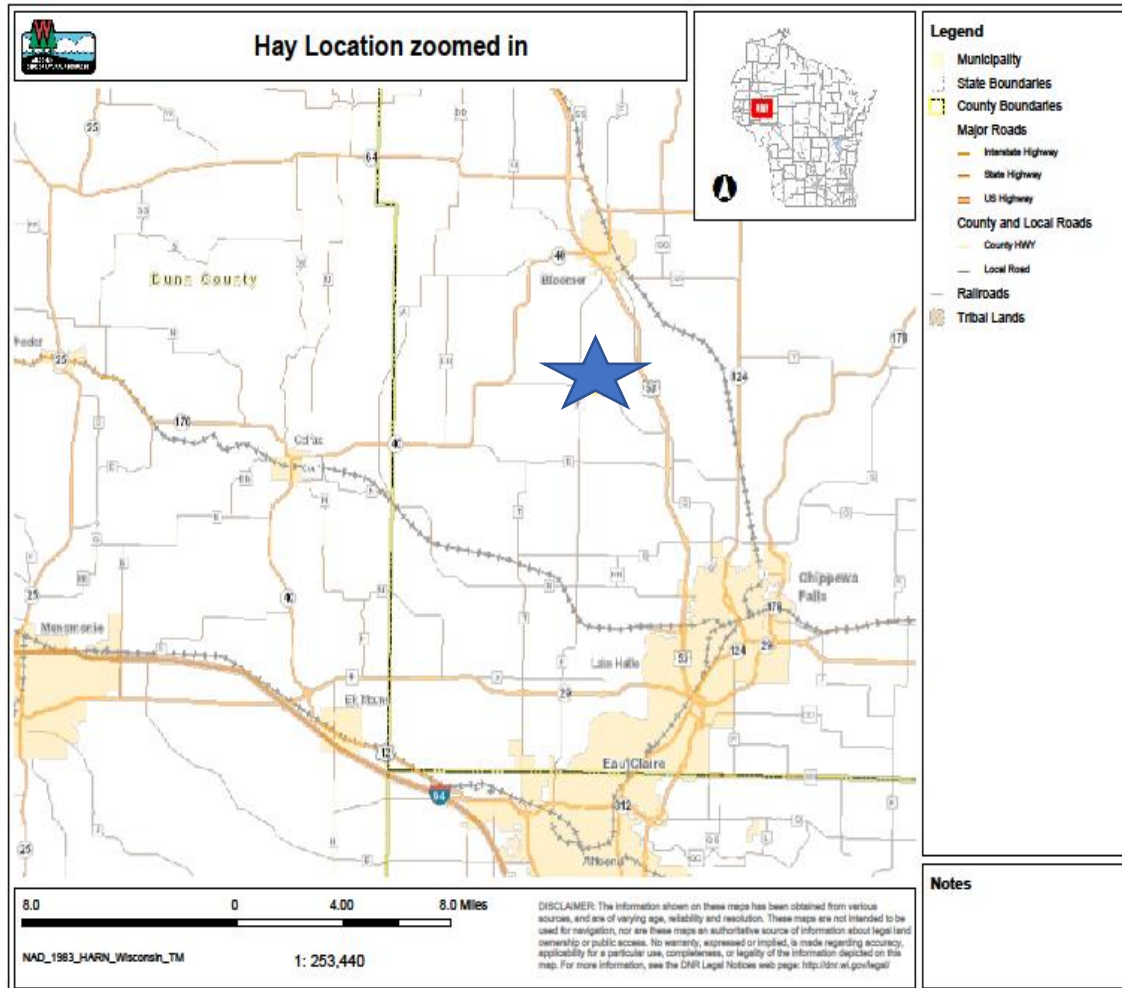
Trimbelle-Thom easement



Trimbelle-Thom easement

- May 1st – End of June
- 2,000 feet of Integrated Bank Treatment
 - 1,500 of both banks, 500 of one bank
- Habitat will be ERO's, root wads, mid stream boulders and spawning riffles

Hay Creek-Chippewa County



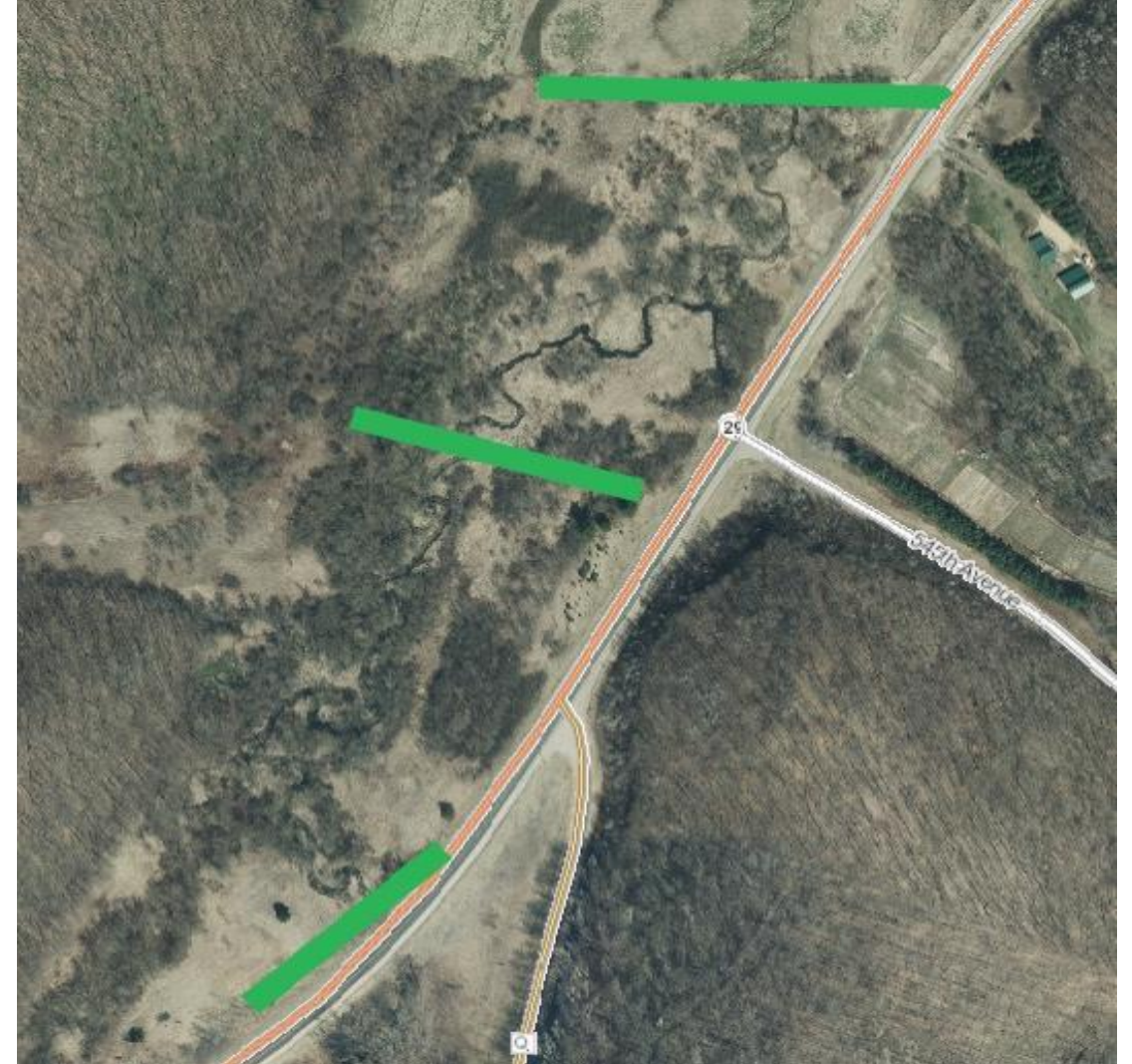
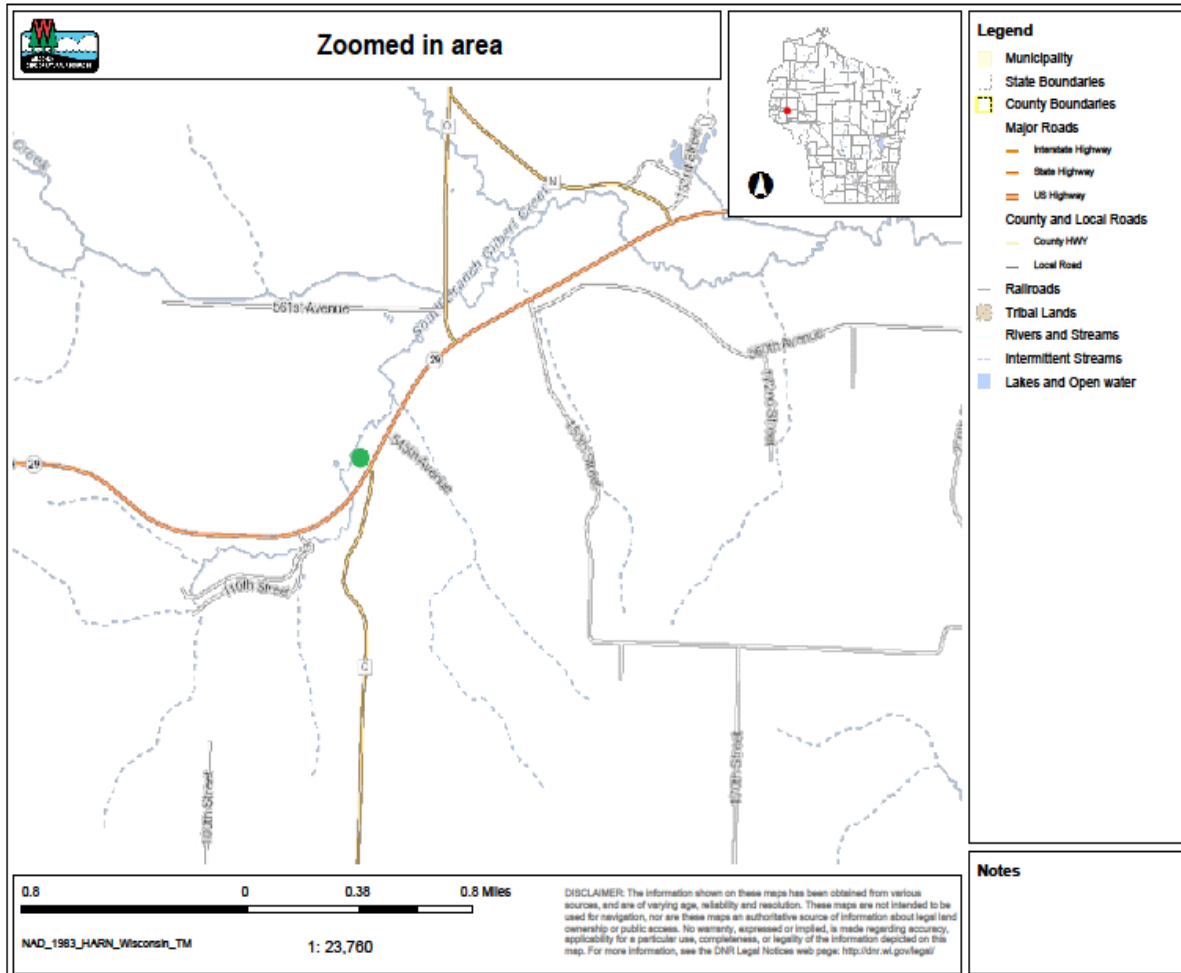
Hay Creek-Chippewa County



Hay Creek-Chippewa County

- July 1st- July 14th
- Protecting one really bad eroding bank~300 feet
 - Low wide floodplain, accelerated due to concrete
 - Prevent sediment moving downstream
 - Get some good vegetation to grow

Gilbert Creek- Fee title



Gilbert Creek-Fee title



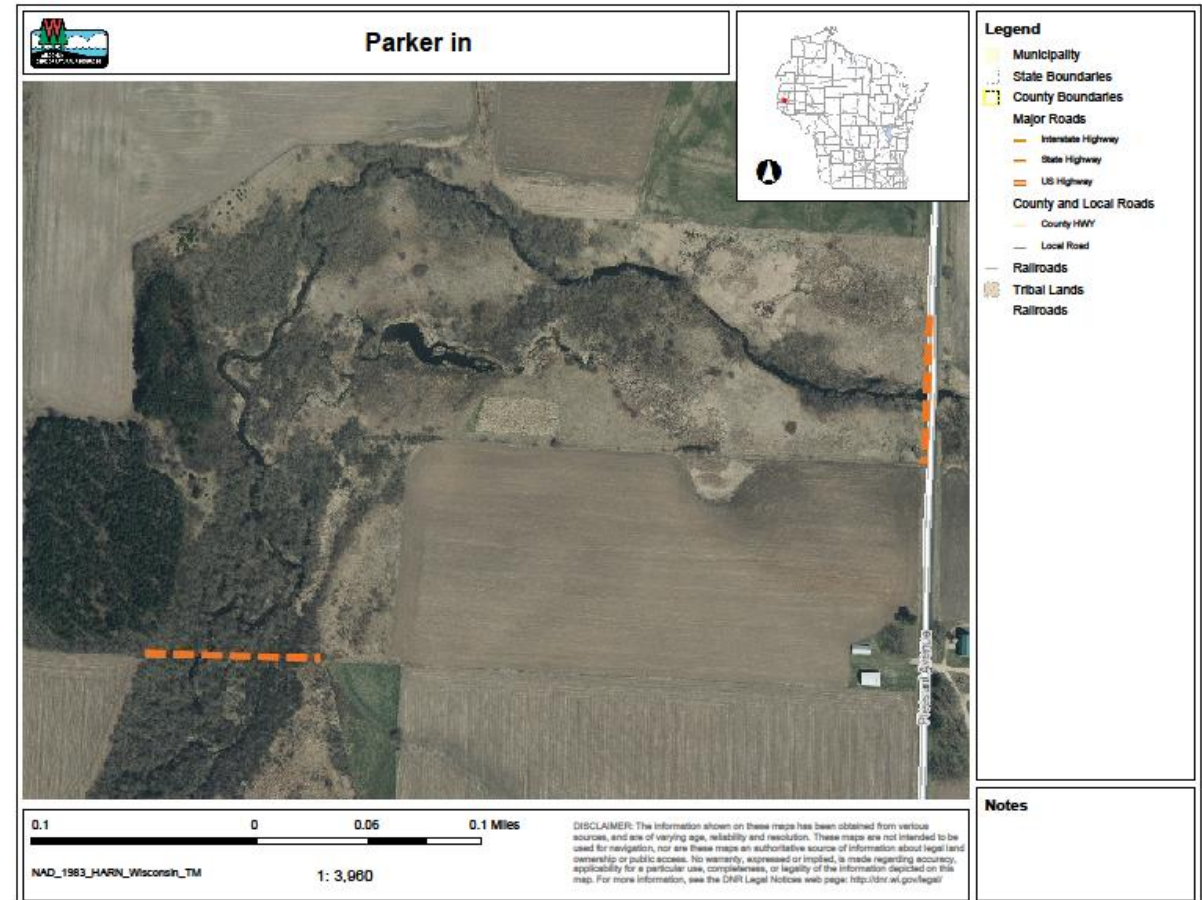
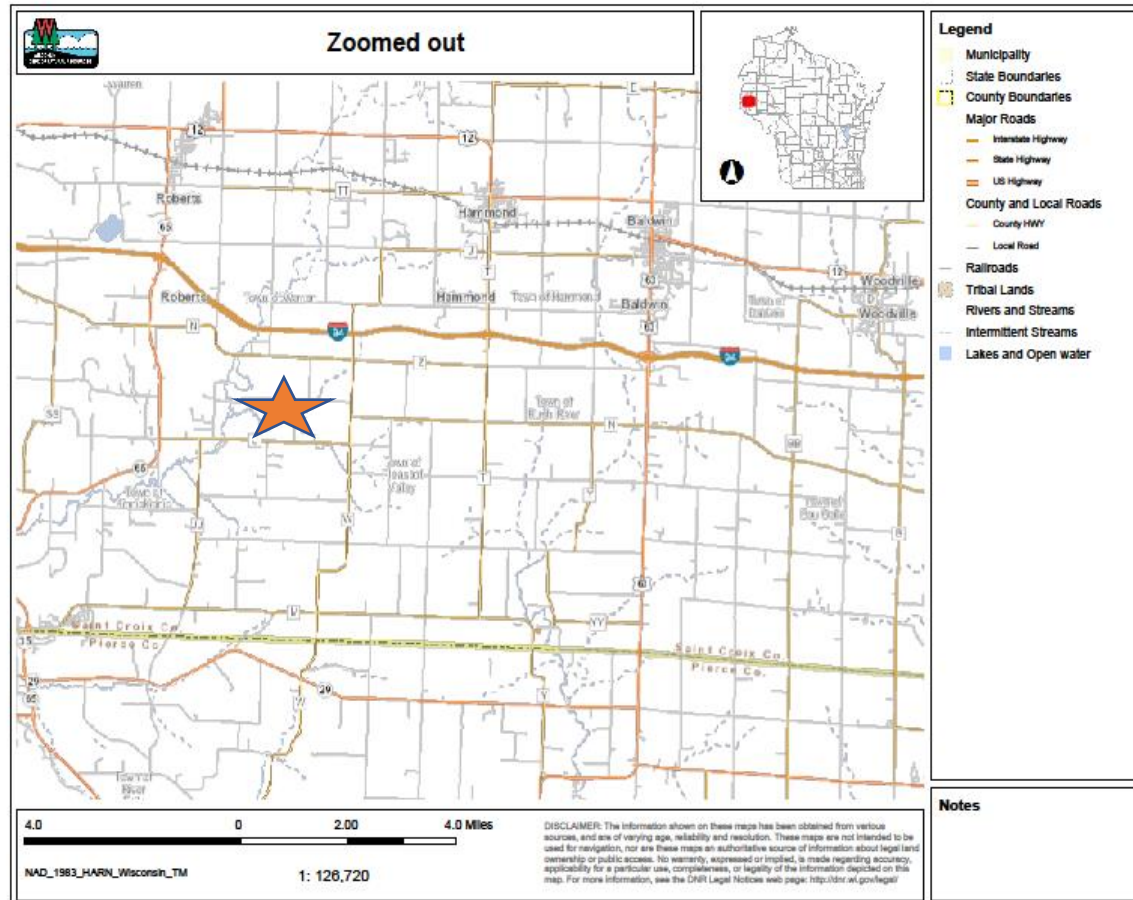
Gilbert Creek-Fee title



Gilbert Creek-Fee Title

- August 1st – Mid September
- Finish up 1,550 feet
- Enhance spawning habitat within headwater section
- Establish prairie cordgrass and cool season grasses with native trees
- Create a maintainable riparian corridor that will still provide shade under warming climate conditions

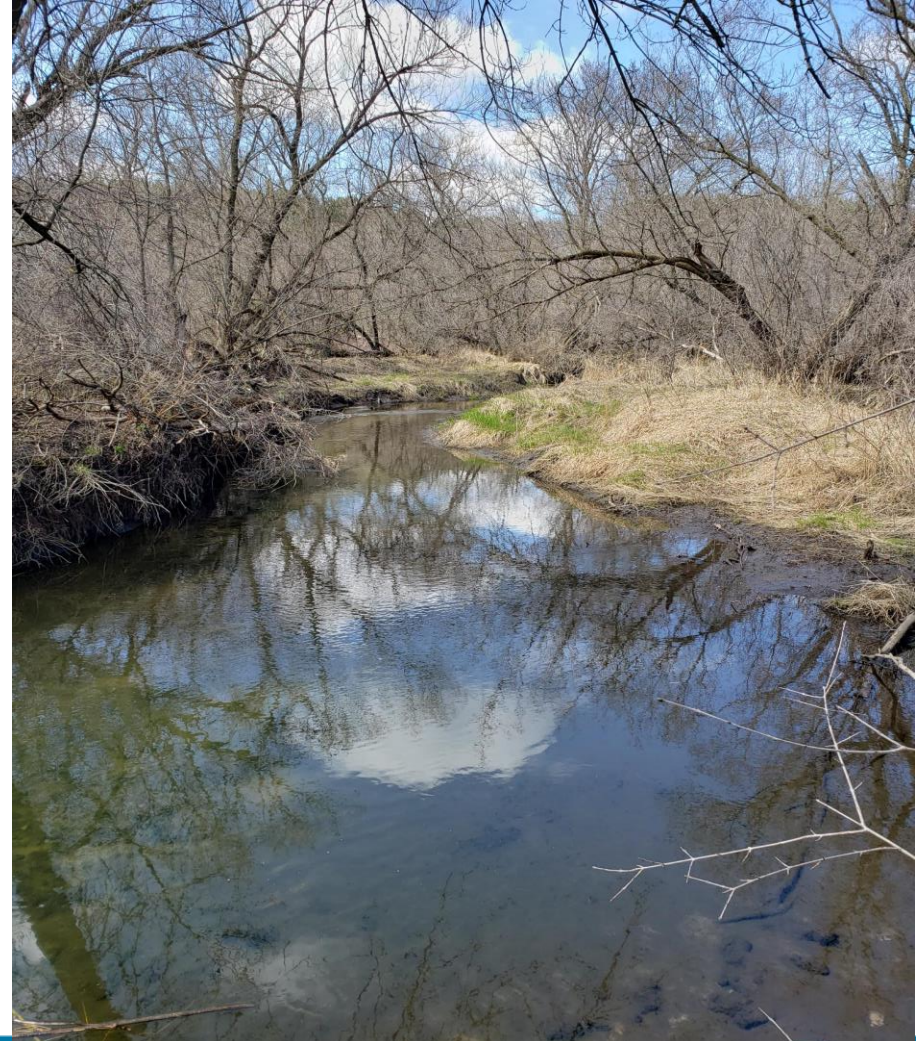
Parker Creek-Fee title



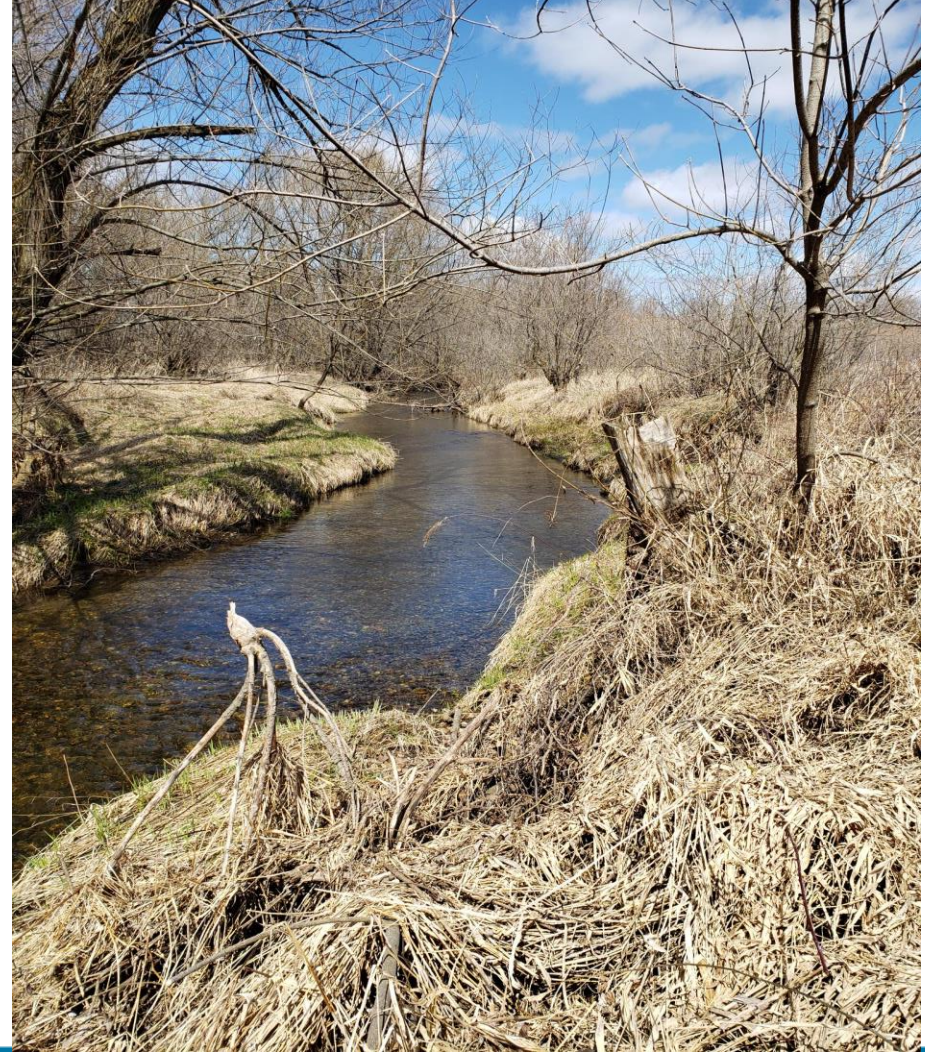
Parker Creek-Fee title



Parker Creek-Fee title



Parker Creek-Fee title



Parker Creek-Fee title

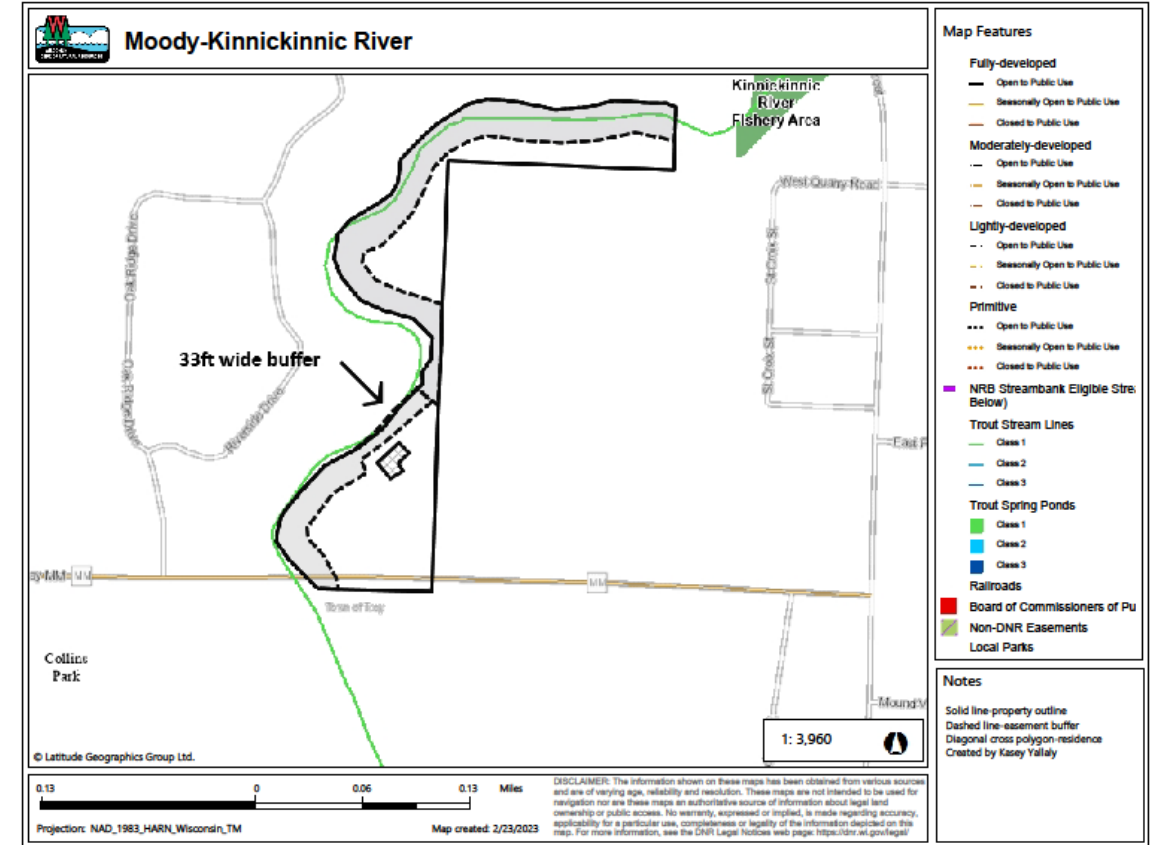
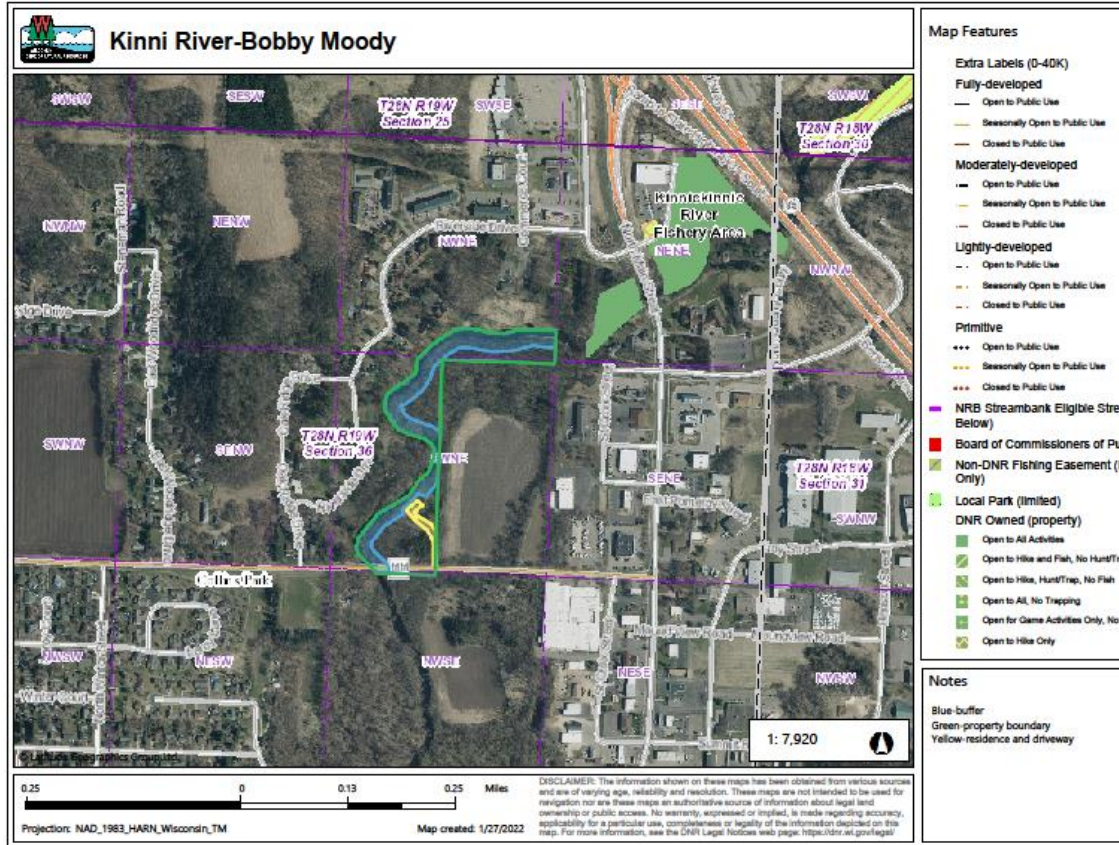
- 4,200 feet, multi year project
- Continuation of past upstream project
- Habitat degradation due to beaver activity
- Willow choked corridor makes fishing difficult

Thank you volunteers!!!!!!!

- Box elders grow fast
- Need to maintain corridors once we complete instream work



New Easement-Moody on Kinni



CONNECT WITH US

Nate Anderson

Nathan.Anderson@Wisconsin.gov

715-590-4742



/WIDNR



@WIDNR



@WI_DNR



/WIDNRTV



"WILD WISCONSIN:
OFF THE RECORD"